



# BLACK MOUNTAIN SOLE

## *First Self-Organized Learning Environment for Higher Education*

We are a 501(c)(3) non-profit organization inspired by the idea that human curiosity is the best motivation for learning. We implement progressive ideas from leading educators to catalyze independent learning at our resort campus. Our innovative self-directed programs support students in exploring their unique areas of interest within a community of motivated people.



Self-directed learning campus



Gap year program for jumpstarting ideas



Personal sabbaticals and group retreats

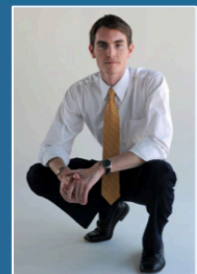


Collaborative working facilities



Seminars & experiential learning programs

Each student has their own learning style and objective for being at BMS. While all of our programs are self-directed, the main difference between each is the extent of pre-structured curricula and coaching available. Geronimo Gap Year and Summer are the most structured programs. They offer a fixed schedule of courses and frequent contact with a personal coach. MOOC Campus offers access to a curriculum advisor, but students choose their own courses and pace of learning. Radical Sabbatical and Coworking have no facilitated curriculum. Participants study, work, and collaborate at their own discretion.



Our team consists of PhDs from leading universities, self-made multimillionaires, founders of successful technology companies, former members of the U.S. Special Forces, renowned artists, skilled teachers, and monks. Our eclectic ensemble shares a love of life and a passion for service.



# BLACK MOUNTAIN SOLE

84 Blue Ridge Circle, Black Mountain, NC 28711

(727) 287-5327

[www.blackmountainsole.org](http://www.blackmountainsole.org)

[info@bmsole.org](mailto:info@bmsole.org)

Black Mountain SOLE is located on a beautiful 1,200-acre campus known as the Blue Ridge Assembly. This inspiring landscape offers scenic mountain streams, ridges, valleys, and spectacular views. Our natural woodland campus is coupled with the advantage of nearby Asheville, North Carolina.

Our facilities include several dedicated buildings, including residential accommodations for students. Amenities include various classrooms, group and private workspaces, media and presentation rooms, auditoriums, and a dining hall. Our campus is a part of a full-service retreat and conference center capable of hosting 30,000 guests annually.

## Amenities

*everything you need to work, so you can relax*

- wired and wireless internet
- private work rooms
- nutritious food
- dry erase boards
- open workspaces
- couches and lounges
- panoramic landscape
- climbing walls
- private and shared desks
- massive flat screens
- print center
- standing desks



**Geronimo Gap Year:** \$10,500

**Geronimo Gap Summer:** TBA

### Daytime Use \*

### Overnight Stay

7 days / week (6am - 10pm)

7 days / week (meals included)

Daily \$12

Daily \$70

Weekly \$75

Weekly \$450

Monthly \$250

Monthly \$1,700

9 Months \$2,250

9 Months \$15,000

\* Meal pricing available upon request.